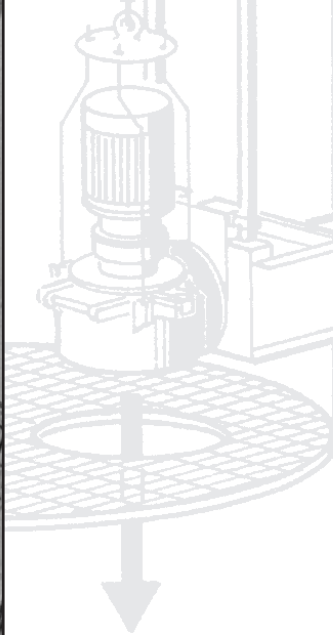
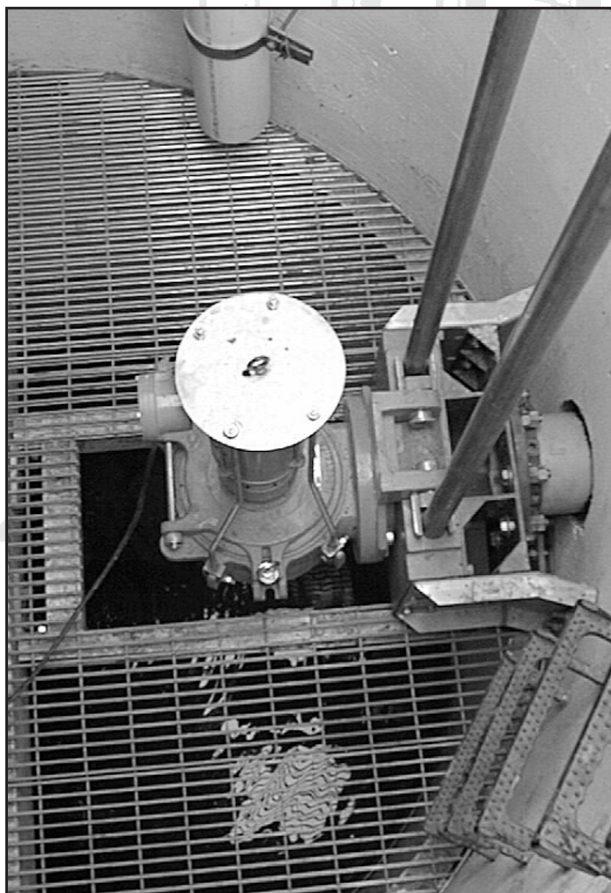


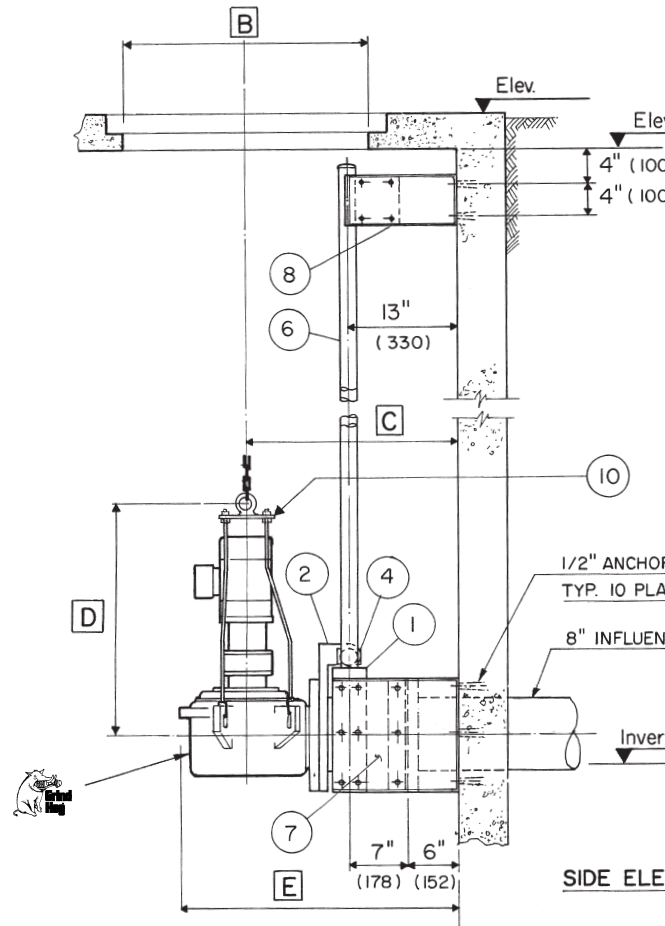
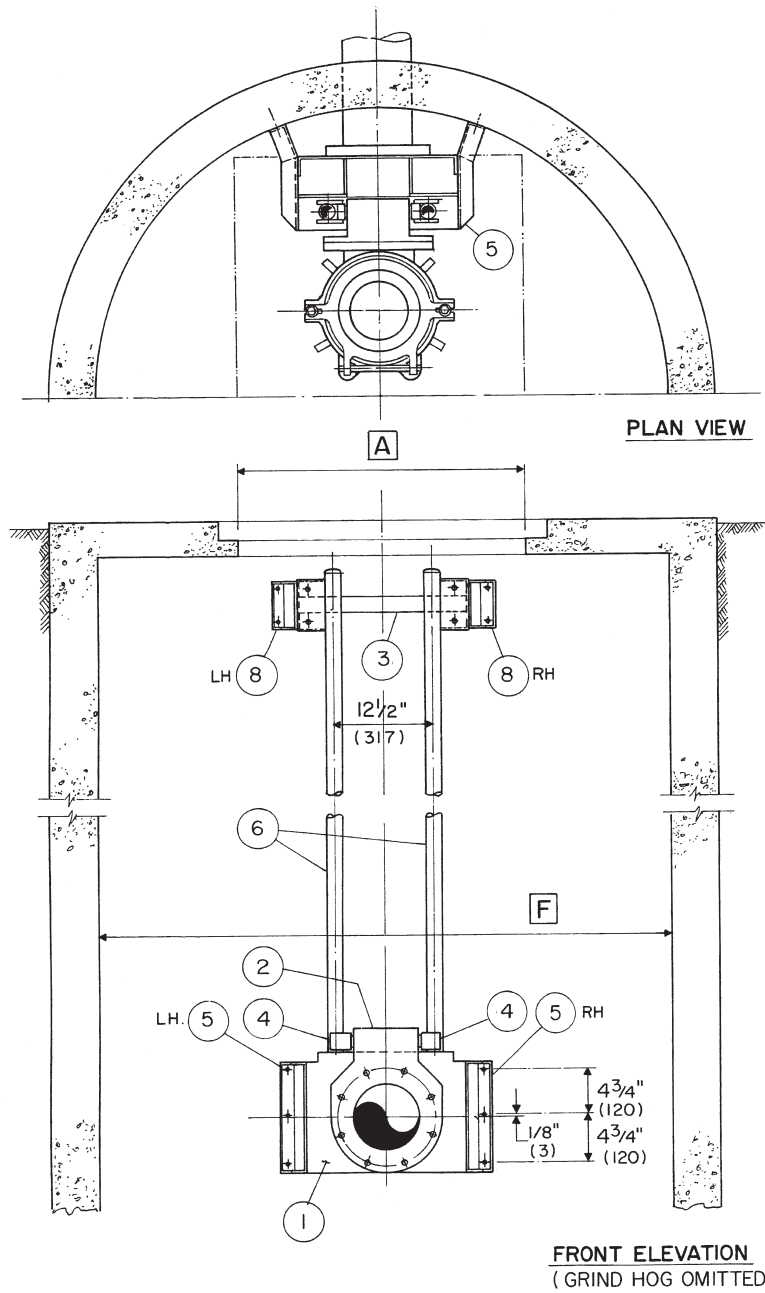


Grind HogTM

**AUTO-COUPLING
WET WELL
REMOVAL SYSTEM**

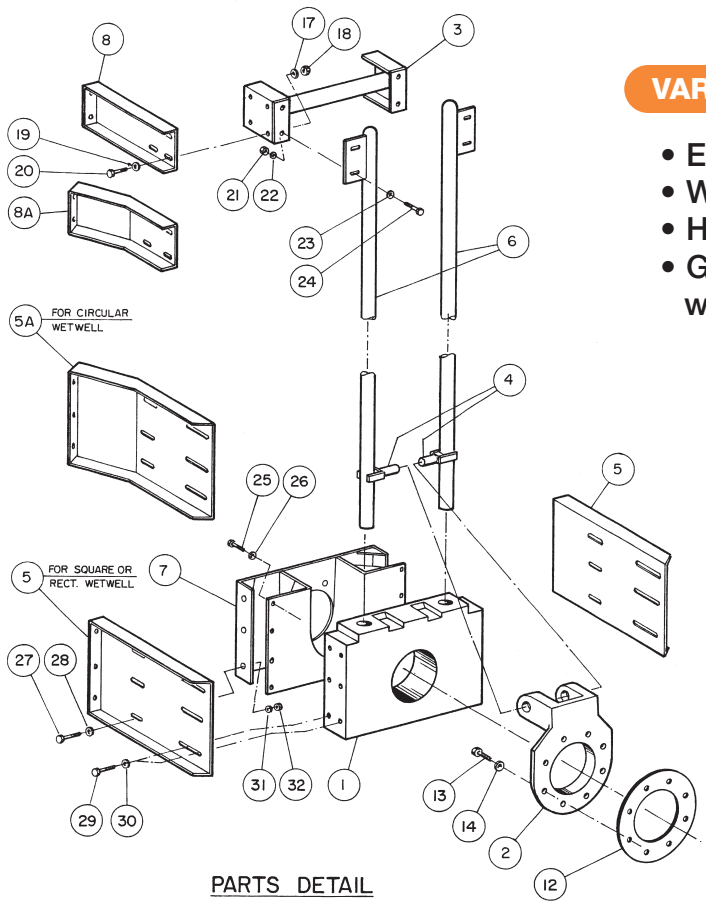


AUTO-COUPLING WET WELL REMOVAL SYSTEM



DIMENSIONAL DETAIL

| MODEL | DIMENSIONS – IMPERIAL/METRIC | | | | | | | | | | LIFTING WEIGHTS | | CAPACITY RATINGS | | | | | |
|--------|------------------------------|-----|---------|-----|--------------------------------|-----|---------|-----|---------|------|--|--|------------------|-----|-----|-----|-----|----|
| | DIM "A" | | DIM "B" | | DIM "C" | | DIM "D" | | DIM "E" | | DIM "F" | | LBS. | KG. | GPM | L/S | | |
| | IN. | MM. | IN. | MM. | IN. | MM. | IN. | MM. | IN. | MM. | <i>Wet Well Dimensions by others</i> | | | | | | | |
| 7AS-8 | 36 | 914 | 36 | 914 | 25 ¹ / ₄ | 641 | 30 | 762 | 34 | 863 | | | | | 350 | 160 | 315 | 20 |
| 10AS-8 | 36 | 914 | 36 | 914 | 28 ³ / ₄ | 730 | 36 | 914 | 41 | 1041 | | | | | 550 | 250 | 850 | 54 |



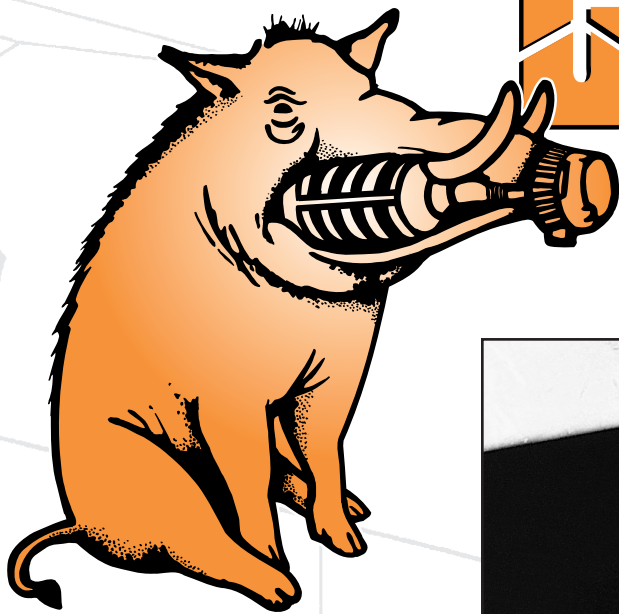
PARTS DETAIL

VARIABLES

- Elevations
- Wet Well Diameter / Dimensions
- Hatch Locations
- Guide Rail Supports - required when over 10'

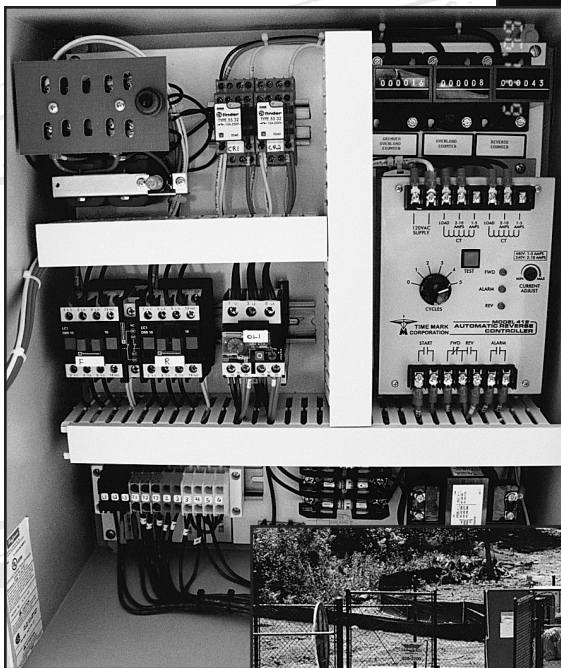
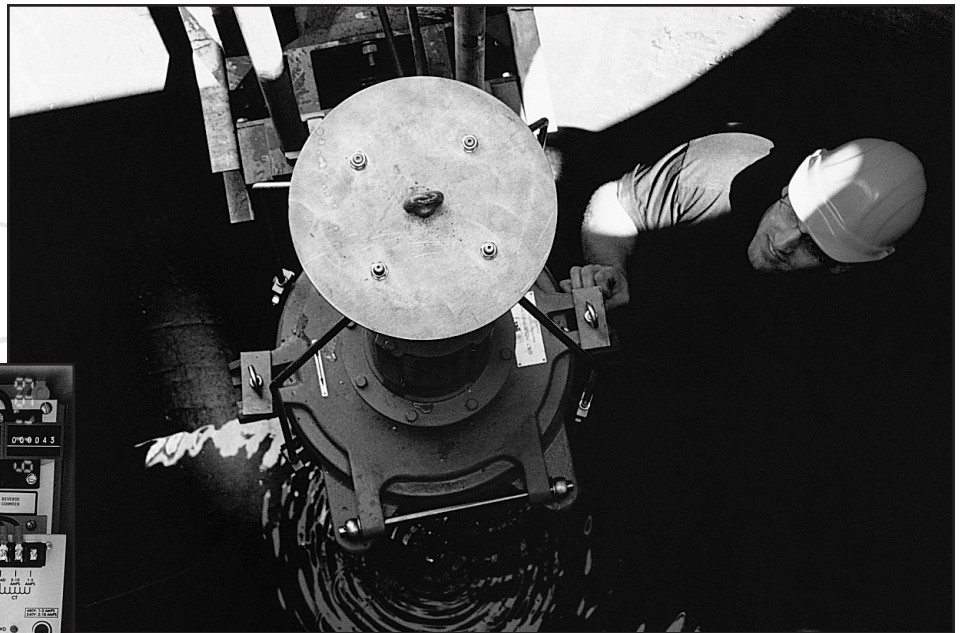
COMPONENT LIST

| ITEM | PART NO. | DESCRIPTION | MAT'L | QTY. |
|-----------------------|----------|--------------------------|-------|----------|
| 1 | 185185 | AUTO-COUPLING BASE-8" | C.I. | 1 |
| 2 | 185186 | AUTO-COUPLING FLANGE-8" | C.I. | 1 |
| 3 | 185188 | SLIDE RAIL UPPER BRACKET | S.S. | 1 |
| 4 | 185189 | SLIDE RAIL GUIDE | S.S. | 2 |
| 5 | 185191 | LOWER WALL BRACKET | S.S. | 2 |
| 6 | 185192 | SLIDE RAIL | S.S. | 2 |
| 7 | 185187 | OVERFLOW | PVC | 1 |
| 8 | 185194 | UPPER WALL BRACKET | S.S. | 2 |
| 9 | 185201 | HATCH ASSEMBLY | AL | OPTIONAL |
| 10 | 185203 | LIFTING HARNESS | S.S. | 1 |
| 11 | 185202 | HOIST | S.S. | OPTIONAL |
| HARDWARE ITEMS | | | | |
| 12 | 185074 | GASKET | RR | 1 |
| 13 | 185195 | BOLT | S.S. | 8 |
| 14 | 185196 | L / WASHER | S.S. | 8 |
| 15/20/24/25/27 | 185197 | BOLT | S.S. | 27 |
| 16/19/23/26/28/30 | 185200 | F / WASHER | S.S. | 39 |
| 17/22/31 | 185160 | L / WASHER | S.S. | 14 |
| 18/21/32 | 185199 | NUT | S.S. | 14 |
| 29 | 185198 | NUT | S.S. | 12 |



Grind HogTM

10ASX



PROJECT

Drewville Road Pump Station
Carmel, NY

CIVIL/ENVIRONMENTAL ENGINEERS

J. Robert Folchetti & Associates, L.L.C.
Somers, NY

CONTRACTOR

Brennan Construction Co.
Mahopac, NY

represented by:



G.E.T. INDUSTRIES INC.

P.O. Box 640, Brampton, Ontario Canada L6V 2L6

T (905) 451-9900 F (905) 451-5376

www.grindhog.com e-mail: get@grindhog.com