



# MODEL 10T/S SPECIFICATION

## 1.0 General Specifications

There will be furnished one (1) only Grind Hog™ Model 10T/S Comminutor as manufactured by G.E.T. Industries, Inc. Rotation shall be in a clockwise direction.

## 1.1 Design Criteria

The comminutor shall be designed to handle the flows indicated below, within the head loss noted.

- (a) hydraulic capacity 1.2 MGD (4500m<sup>3</sup>/day)
- (b) satisfactory operation shall occur under conditions of zero flow
- (c) head loss at peak flow shall not exceed 10 inches (254 mm)
- (d) design shall be such that the flow enters the size reduction and screening device horizontally and exits vertically downward to facilitate the flushing of solids

## 1.2 Cover Plate

Shall be:

- a) of heavy-duty construction and of high quality cast iron
- b) fitted with 4 position lock down arrangement, and 2 alignment holes for repositioning following service
- c) located on, and positioned by wall mounted supports allowing for ease of removal for inspection and maintenance.

## 1.3 Rotating Drum Screen

- (a) heavy-duty Cast Ductile Iron ASTM 536, grade 60-45-18

## 1.4 Cutting Elements

- (a) replaceable shear bars constructed of high-quality A2 tool-steel shall be attached to the rotating drum. Each shear bar shall be machined from solid bar stock, surface ground to establish exact tolerances
- (b) the stationary cutting bar, shall be of high-quality 01 tool steel hardened to a minimum of 56 Rockwell C, and shall be reversible, allowing for four (4) sets of cutting edges prior to sharpening or replacement
- (c) all submerged fasteners shall be of stainless steel

## 1.5 Motor

TEFC 1 Hp. Motor suited to outdoor weatherproof service (IP55) on \_\_\_\_\_ volt, \_\_\_\_\_ phase, \_\_\_\_\_ cycle service. Close-coupled

## 1.6 Drive Arrangement

- a) the motor shall be close-coupled to a speed reducer drive, a heavy duty planetary gear of the totally enclosed non-vented type suitable for total submergence during emergencies

---

**G.E.T. INDUSTRIES INC.**

Toll Free: 877-213-7418 Email: [get@grindhog.com](mailto:get@grindhog.com) Web: [www.grindhog.com](http://www.grindhog.com)

## SPECIFICATION cont'd...

---



- b) double seals on the output shaft shall ensure flood-proof operation through a reduction ratio of 35:1
- c) the cycloidal reducer shall be capable of withstanding shock loads to 500% of its mechanical rating of 4.27 Hp. and be warranted for two (2) years
- d) the drive shall have a minimum full load efficiency of 90% and be pre-lubricated with grease, requiring routine maintenance every 500 to 1,000 hours

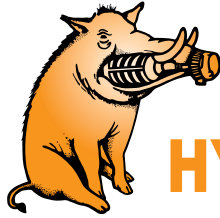
### 1.7 "Toilet Seat" Channel Mounting System

Shall consist of a box style structure fabricated of 304 stainless steel dimensioned to suit the existing channel and supported from above for ease of installation.

---

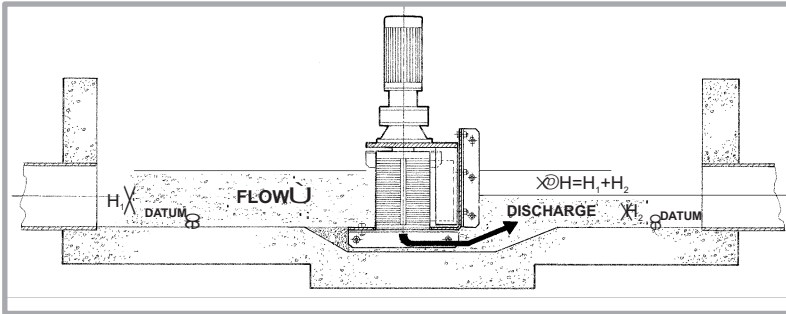
**G.E.T. INDUSTRIES INC.**

Toll Free: 877-213-7418 Email: [get@grindhog.com](mailto:get@grindhog.com) Web: [www.grindhog.com](http://www.grindhog.com)



# Grind Hog™

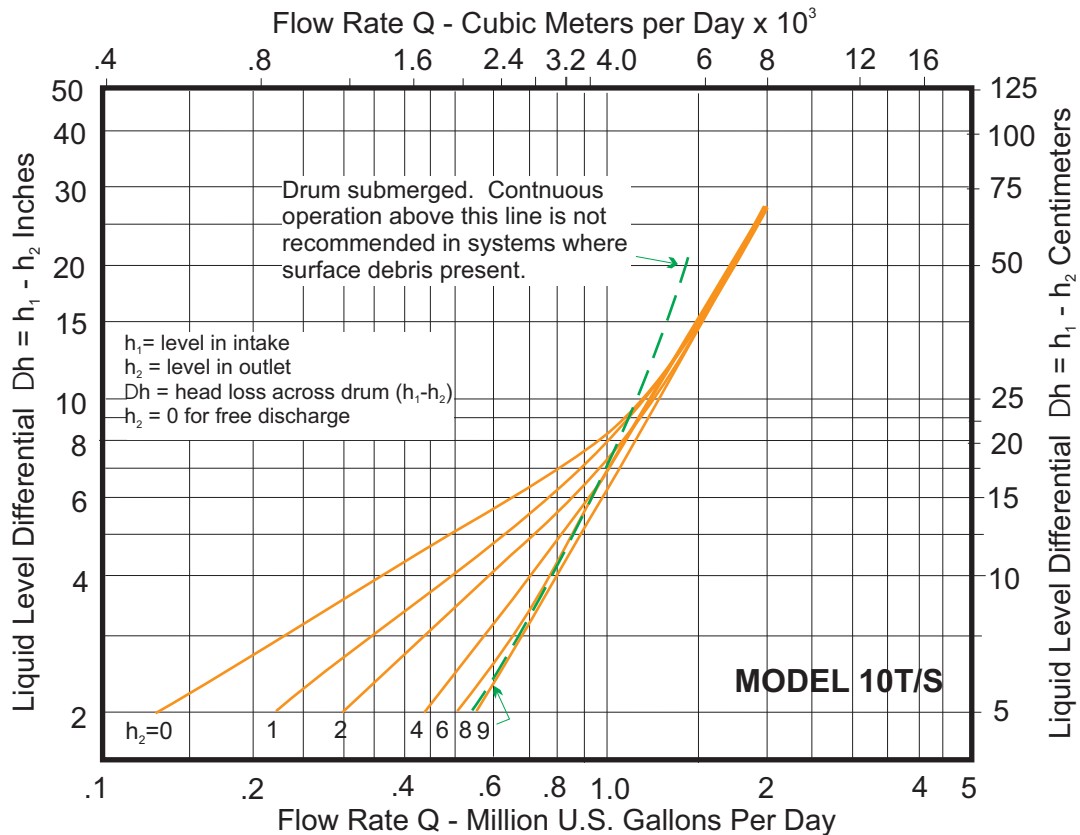
## HYDRAULIC DATA SHEET IN-CHANNEL MODEL 10 T/S



### GENERAL DATA

<b>Capacity</b>	0-1.2 MGD (US)	0-4500 m <sup>3</sup> /day
<b>Drum Diam.</b>	9.4 in	23.9 cm
<b>Inlet Area</b>	97 in <sup>2</sup>	625.8 cm <sup>2</sup>
<b>Outlet Area</b>	45 in <sup>2</sup>	290.3 cm <sup>2</sup>
<b>Slot Width</b>	0.470 in	12 mm

### HYDRAULIC PERFORMANCE CURVE





# IN-CHANNEL MODEL 10 T/S cont'd...

## DESIGN FEATURES

### **SUMITOMO SM-CYCLO SPEED REDUCER 6000 SERIES**

- HIGHEST OVERLOAD CAPACITY FOR FREQUENT STOP-START AND SEVERE REVERSING
  - SMOOTH, SILENT OPERATION
  - EXCEPTIONAL LIFE
- Torque transmitting parts roll, don't grind.  
There is no sliding friction, so output torque/input horsepower efficiency approaches 95%

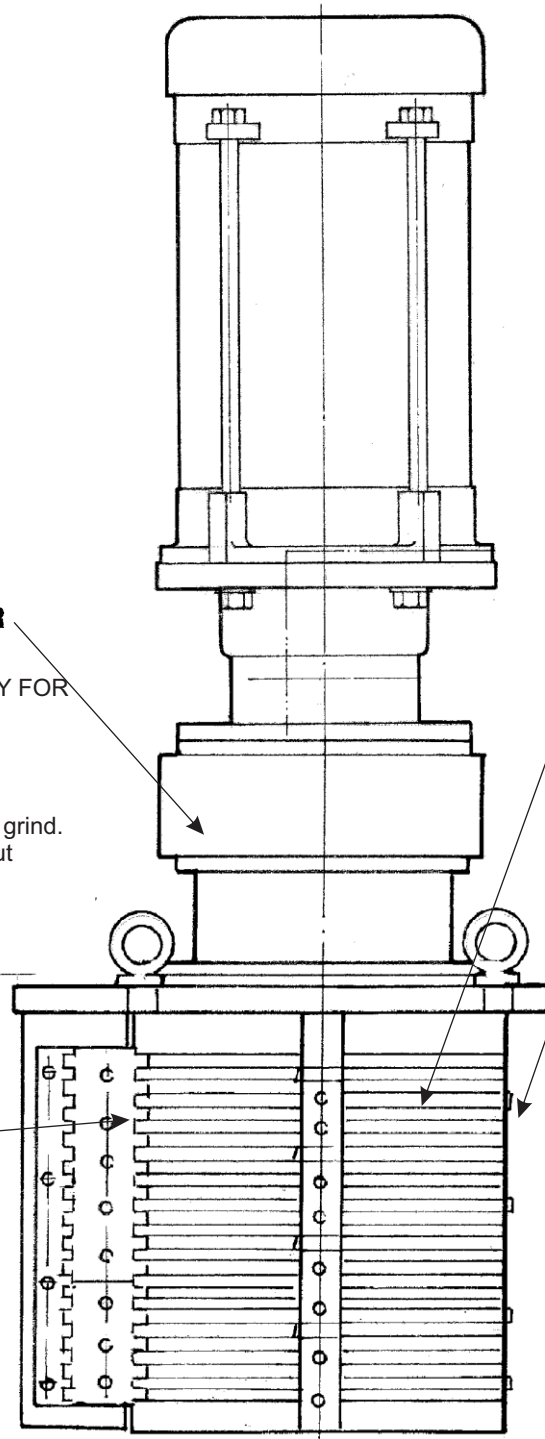
- ### **STATIONARY CUTTING BAR**
- REVERSE-SPARE STANDARD EQUIPMENT
  - A2 HIGH QUALITY TOOL STEEL
  - HIGH RESISTANCE TO WEAR

- ### **CAST DUCTILE IRON SEWAGE SCREEN**
- LONG LIFE UNDER ABRASIVE CONDITIONS

- ### **ROTATING SHEAR BAR ASSEMBLY**
- MACHINED FROM SOLID BARSTOCK
  - PRECISE TOLERANCES MAINTAINED

- ### **SUBMERGED FASTENERS OF STAINLESS STEEL**

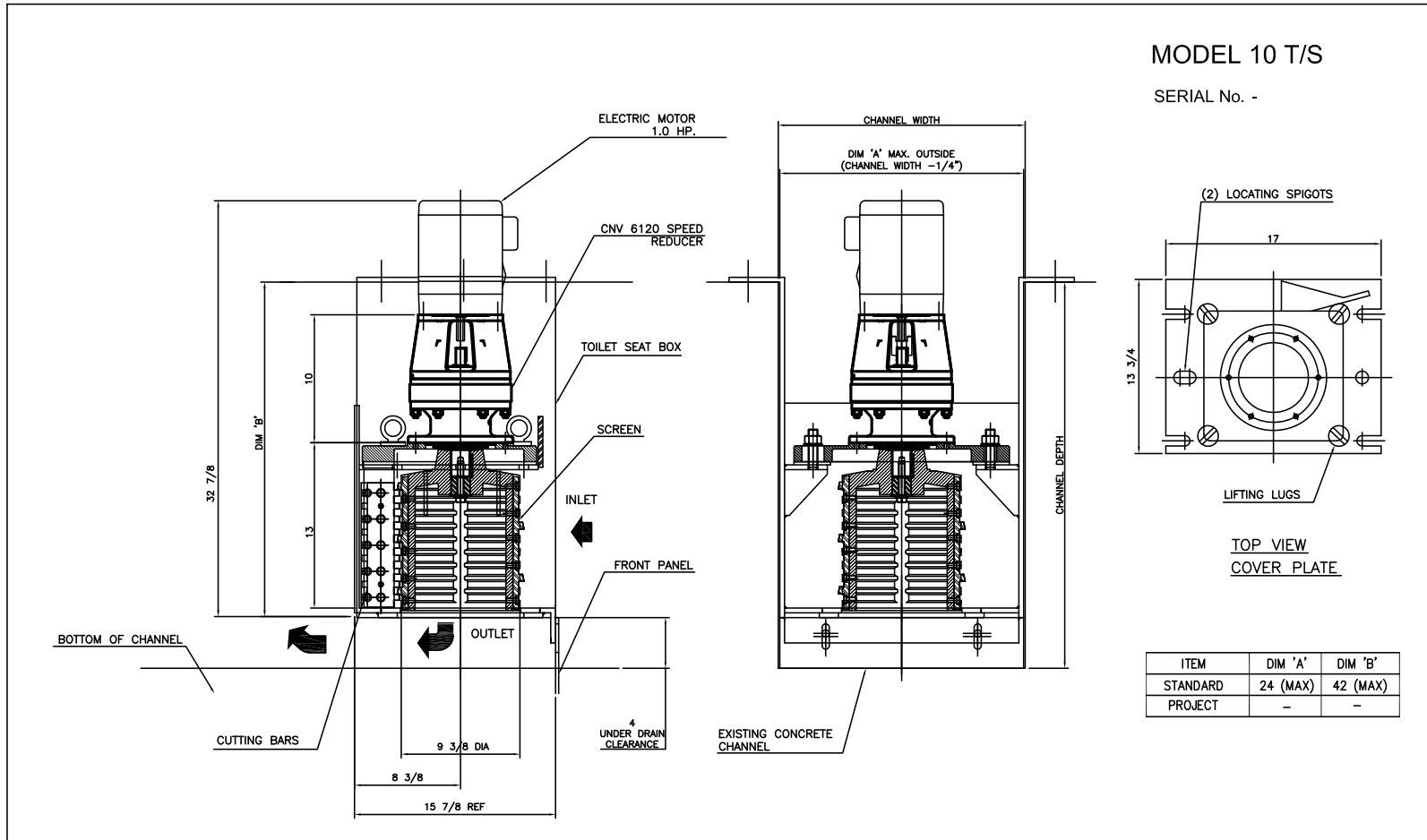
- ### **HEAVY DUTY CAST IRON CONSTRUCTION**





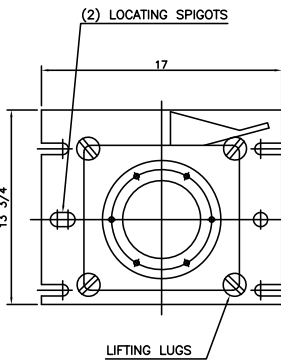
**Grind Hog™**

# MECHANICAL DETAIL



MODEL 10 T/S

SERIAL No. -



TOP VIEW  
COVER PLATE

ITEM	DIM 'A'	DIM 'B'
STANDARD	24 (MAX)	42 (MAX)
PROJECT	-	-

SIDE VIEW

MATERIALS OF CONSTRUCTION & GENERAL ENGINEERING DATA

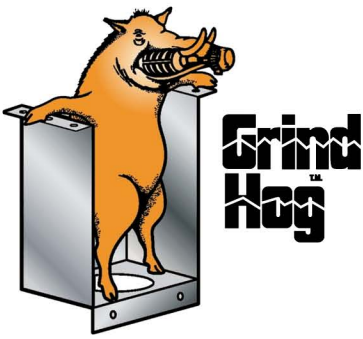
HOUSING:	GREY IRON	CAPACITY	1.2 MGD (US) / 4500 m3/day	INLET AREA	97 SQ IN	626 cm sq							
DRUM (SCREEN):	DUCTILE IRON (ASTM 536 GRADE 60-45-18)	DRUM SPEED	50 RPM	OUTLET AREA	45 SQ IN	290 cm sq							
SHEAR BARS:	AISI-A2 HIGH ALLOY TOOL STEEL	ROTATION	CLOCKWISE	DRUM DIAMETER	9.4 IN	23.9 cm							
CUTTING BARS:	AISI-01 TOOL STEEL REVERSIBLE	SLOT WIDTH	.470 IN / 12 mm	WEIGHT	400 LB	181 kg							
HARDWARE & FASTENERS:	304 STAINLESS STEEL	No. OF SLOTS	36										
MOTOR MANUFACTURER:		POWER:	- / 3 / 60	RPM:	1750	REDUCER:	SM - CYCLO	MODEL:	V6120				
STYLE:	TEFC	HP:	1.0	KW:	0.746	FRAME:	56C	FLANGE:	'C'	RATIO:	35:1	RATING:	4.27 HP



**G.E.T. INDUSTRIES INC.**

get@grindhog.com  
www.grindhog.com  
1 (877) 213-7418

TOLERANCES	INFO	SCALE	NTS
DECIMAL		DRAWN BY	G.P.
FRACTIONAL	INFO	APPROVED BY	W.D.M.
ANGULAR	INFO		
DATE	FILE NO.	DWG. No.	REV.
SEP. 2013		6 0193.2	



# HORIZONTAL FLOW

RETROFIT ALTERNATIVE

## “TOILET SEAT BOX STYLE” DROP IN REPLACEMENT

PROJECT: \_\_\_\_\_

ANTICIPATED PEAK FLOW: \_\_\_\_\_

EXISTING CHANNEL:

Width (w): \_\_\_\_\_

Depth (d): \_\_\_\_\_

Underdrain Clearance (c): \_\_\_\_\_

MOTOR REQUIREMENTS:

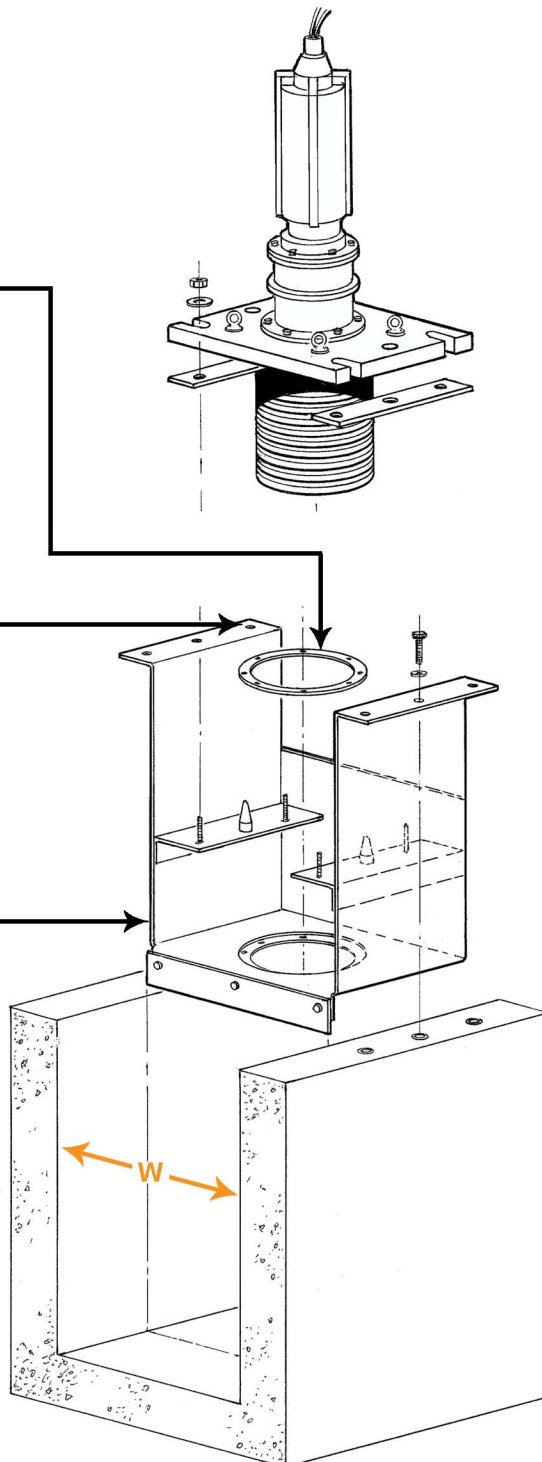
Power: \_\_\_\_\_ / \_\_\_\_\_ / \_\_\_\_\_

Enclosure: \_\_\_\_\_

Replaceable wear ring for extended life

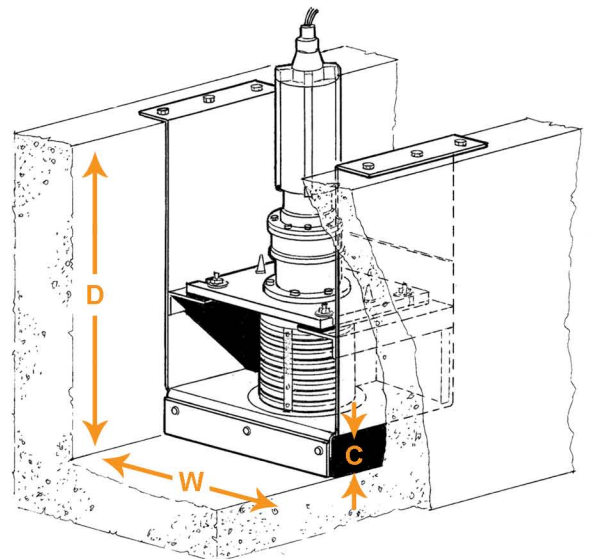
Supported from above on the channel walls, eliminating the requirement for any submerged anchorage

Fabricated from 304 Stainless Steel to suit existing channel dimensions



### REPLACING

- Barminutor
- Clow Aer-O-Flo
- Franklin Miller-Diminutor
- Infilco Degremont
- Muffin Monster
- Worthington
- .....Among others



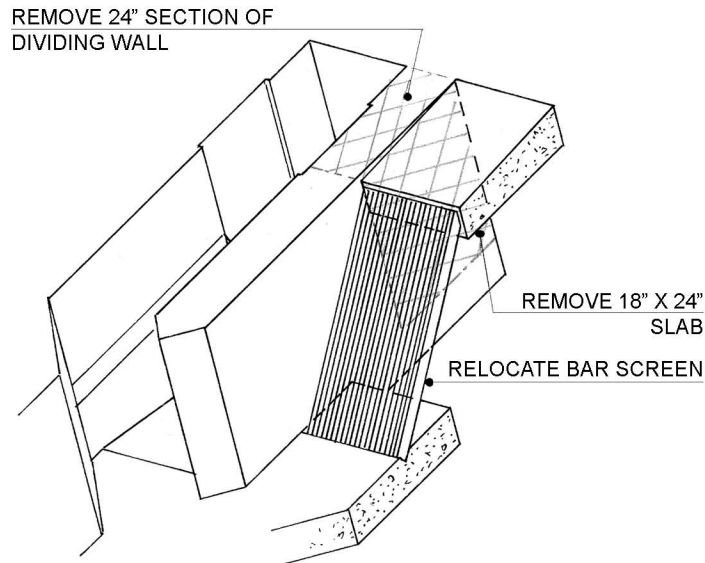


# HORIZONTAL FLOW

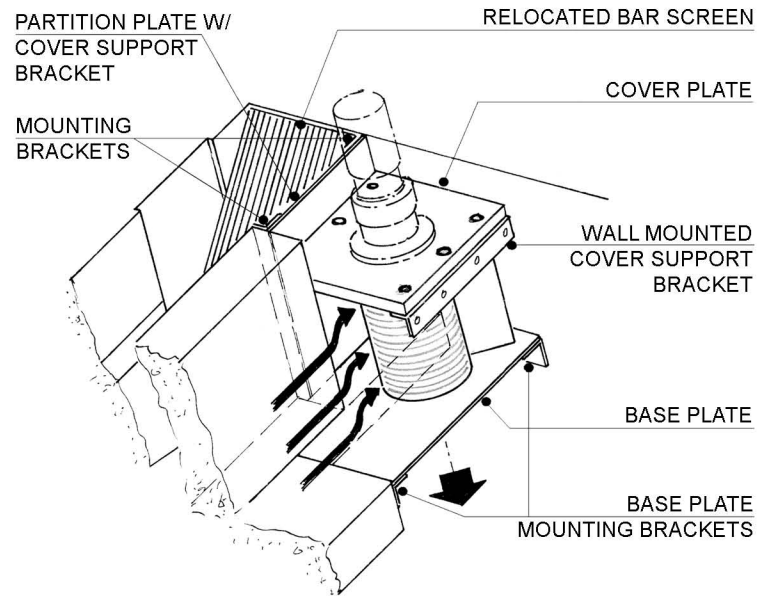


Customized to suit each application

## ORIGINAL CHANNEL



## PROPOSED CHANGES



Original  
Worthington 15-5



Custom Fabricated  
Basin



16 ASX T/S



Custom Fabricated Basin  
& 16ASX T/S  
Ready for Shipment

G.E.T. INDUSTRIES INC.

Toll free: (877) 213-7418

Email: [get@grindhog.com](mailto:get@grindhog.com)

Web: [www.grindhog.com](http://www.grindhog.com)