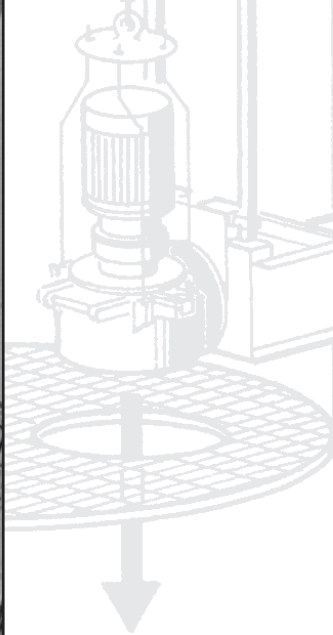
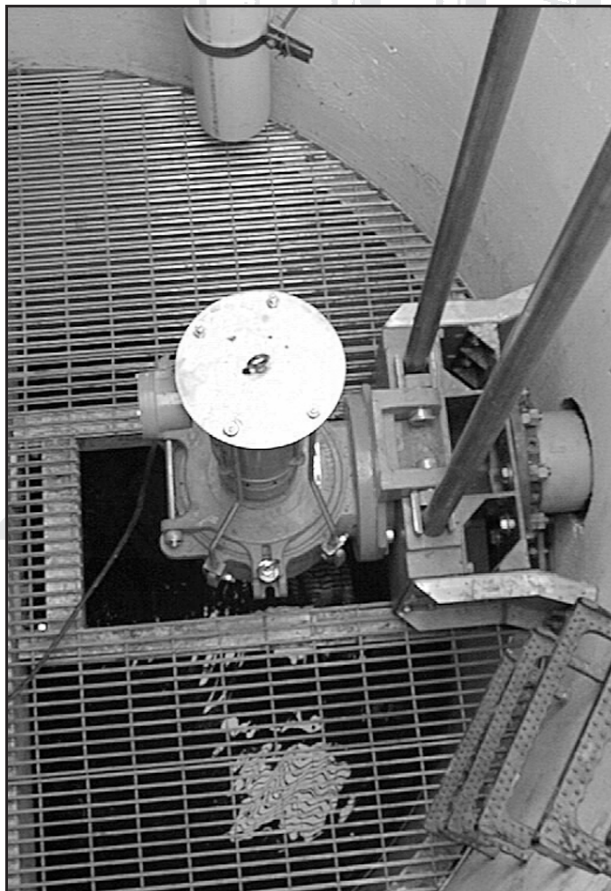


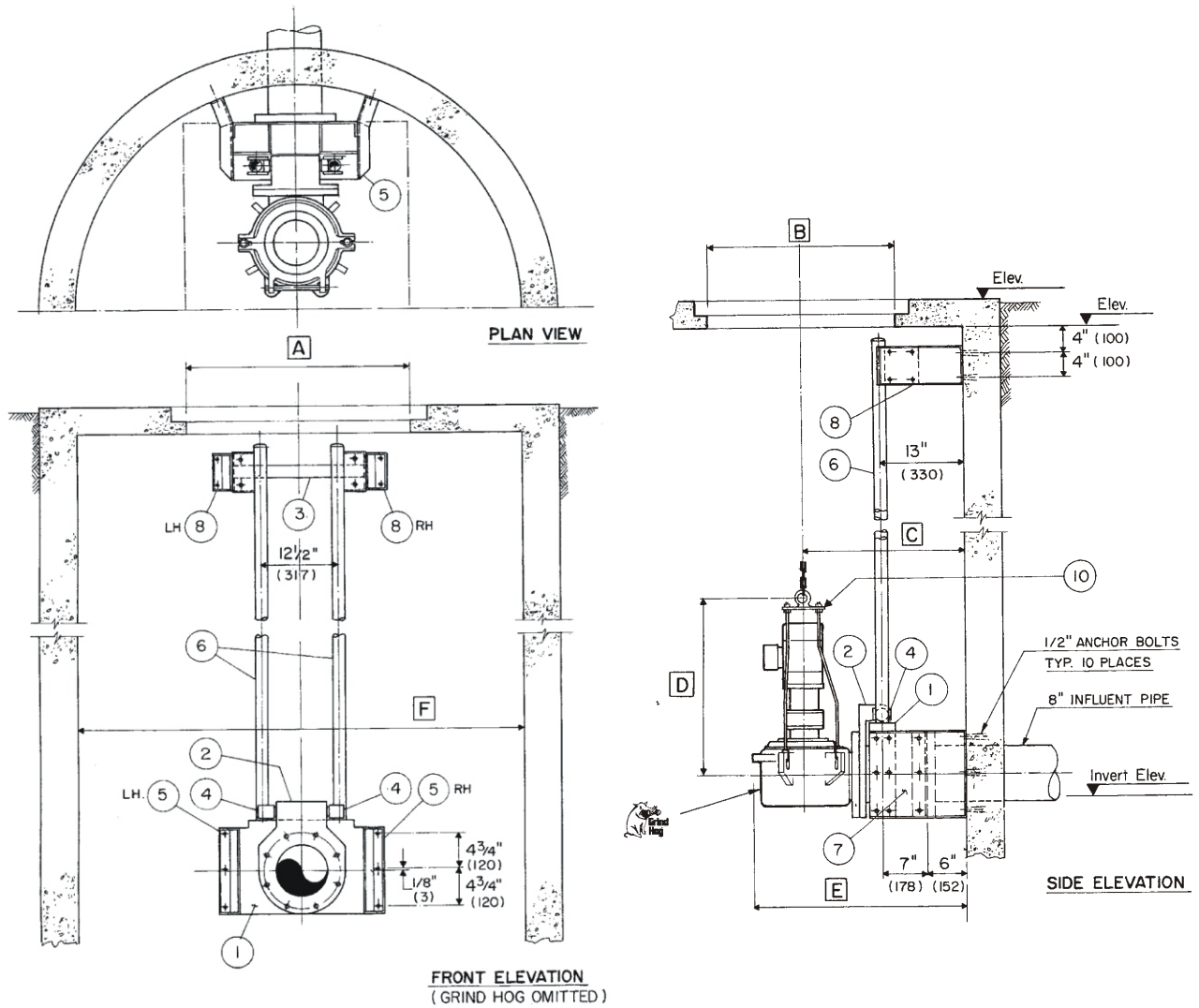


Grind Hog^{TM.}

**AUTO-COUPLING
WET WELL
REMOVAL SYSTEM**

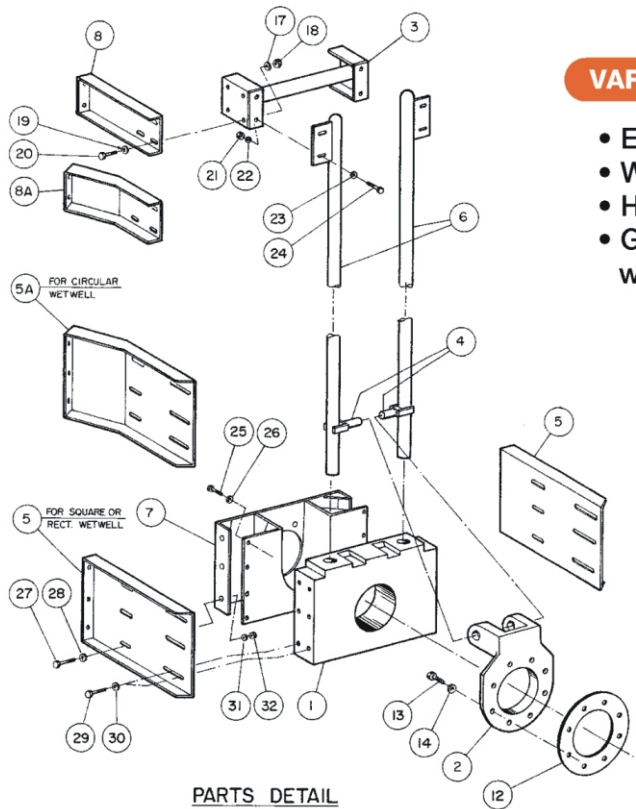


AUTO-COUPLING WET WELL REMOVAL SYSTEM



DIMENSIONAL DETAIL

MODEL	DIMENSIONS – IMPERIAL/METRIC										LIFTING WEIGHTS		CAPACITY RATINGS					
	DIM "A"		DIM "B"		DIM "C"		DIM "D"		DIM "E"		DIM "F"	LBS.	KG.	GPM	L/S			
	IN.	MM.	IN.	MM.	IN.	MM.	IN.	MM.	IN.	MM.		<i>Wet Well Dimensions by others</i>						
7AS-8	36	914	36	914	25 ¹ / ₄	641	30	762	34	863	350					160	315	20
10AS-8	36	914	36	914	28 ³ / ₄	730	36	914	41	1041	550					250	850	54

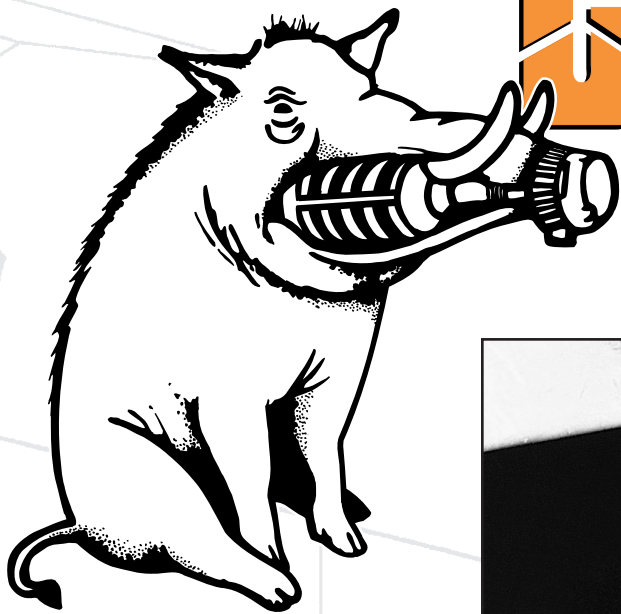


VARIABLES

- Elevations
- Wet Well Diameter / Dimensions
- Hatch Locations
- Guide Rail Supports - required when over 10'

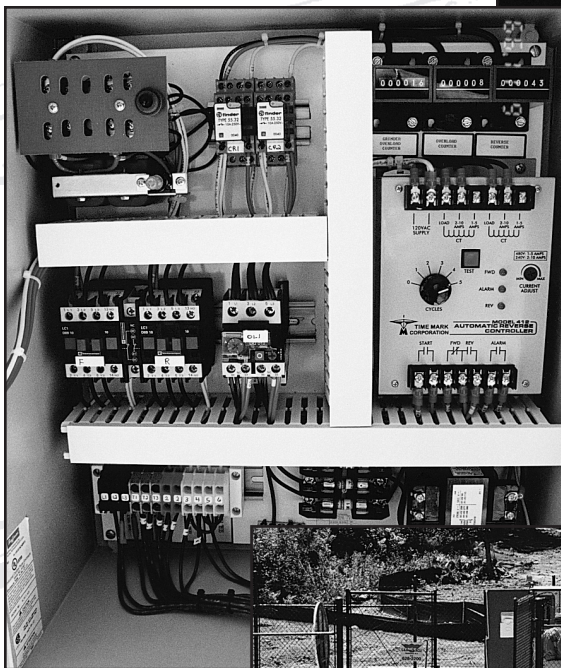
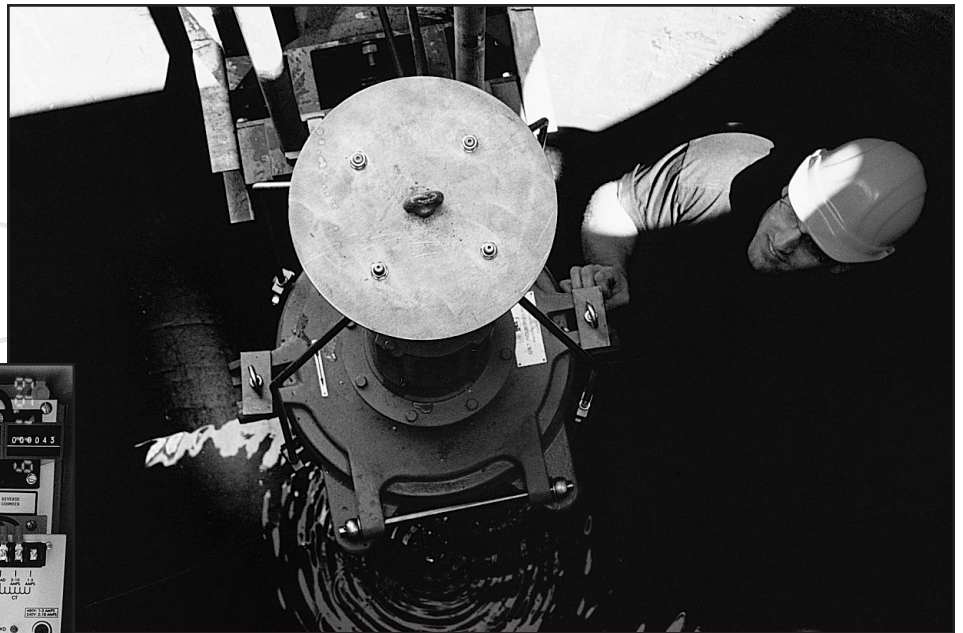
COMPONENT LIST

ITEM	PART NO.	DESCRIPTION	MAT'L	QTY.
1	185185	AUTO-COUPLING BASE-8"	C.I.	1
2	185186	AUTO-COUPLING FLANGE-8"	C.I.	1
3	185188	SLIDE RAIL UPPER BRACKET	S.S.	1
4	185189	SLIDE RAIL GUIDE	S.S.	2
5	185191	LOWER WALL BRACKET	S.S.	2
6	185192	SLIDE RAIL	S.S.	2
7	185187	OVERFLOW	PVC	1
8	185194	UPPER WALL BRACKET	S.S.	2
9	185201	HATCH ASSEMBLY	AL	OPTIONAL
10	185203	LIFTING HARNESS	S.S.	1
11	185202	HOIST	S.S.	OPTIONAL
HARDWARE ITEMS				
12	185074	GASKET	RR	1
13	185195	BOLT	S.S.	8
14	185196	L / WASHER	S.S.	8
15/20/24/25/27	185197	BOLT	S.S.	27
16/19/23/26/28/30	185200	F / WASHER	S.S.	39
17/22/31	185160	L / WASHER	S.S.	14
18/21/32	185199	NUT	S.S.	14
29	185198	NUT	S.S.	12



Grind HogTM

10ASX



PROJECT

Drewville Road Pump Station
Carmel, NY

J. Robert Folchetti & Associates, L.L.C.
Somers, NY

CONTRACTOR

Brennan Construction Co.
Mahopac, NY

represented by:

Grind HogTM

G.E.T. INDUSTRIES INC.

P.O. Box 640, Brampton, Ontario Canada L6V 2L6

T (905) 451-9900 F (905) 451-5376

www.grindhog.com e-mail: get@grindhog.com