

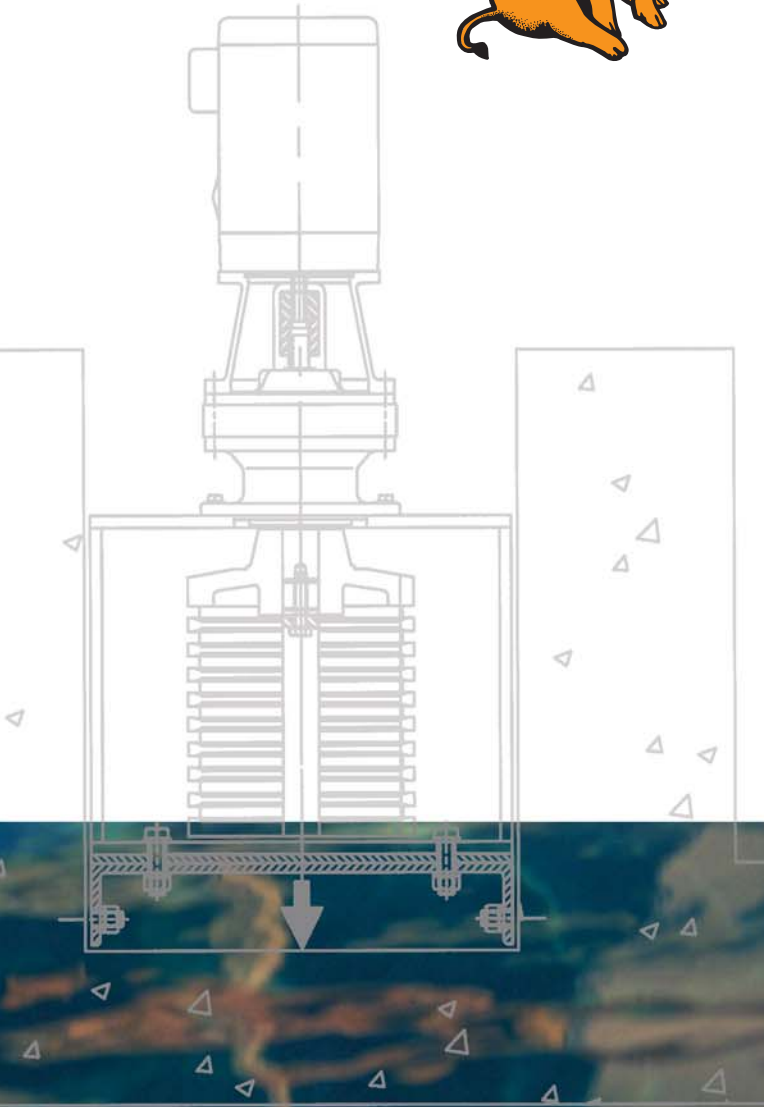


Grind HogTM

Retrofit

of choice for

- Pumping Stations
- Treatment Plant Headworks
- Package Plants



Shredding & Screening Wastewater Solids - Since 1975



Straight Rectangular Channels

Shade Central City - Joint Sewer Authority, Central City, PA.

- Grind Hog™ 16A T/S (3.5 mgd) replacing Worthington Model 15 (2.40 mgd without overflow baffle)



Front View



Rear View



Pine Hollow Pump Station - Hermitage Municipal Authority, Hermitage, PA.

- Enhanced flow capability by 50%
- Readily removed for service
- Flood protected drive

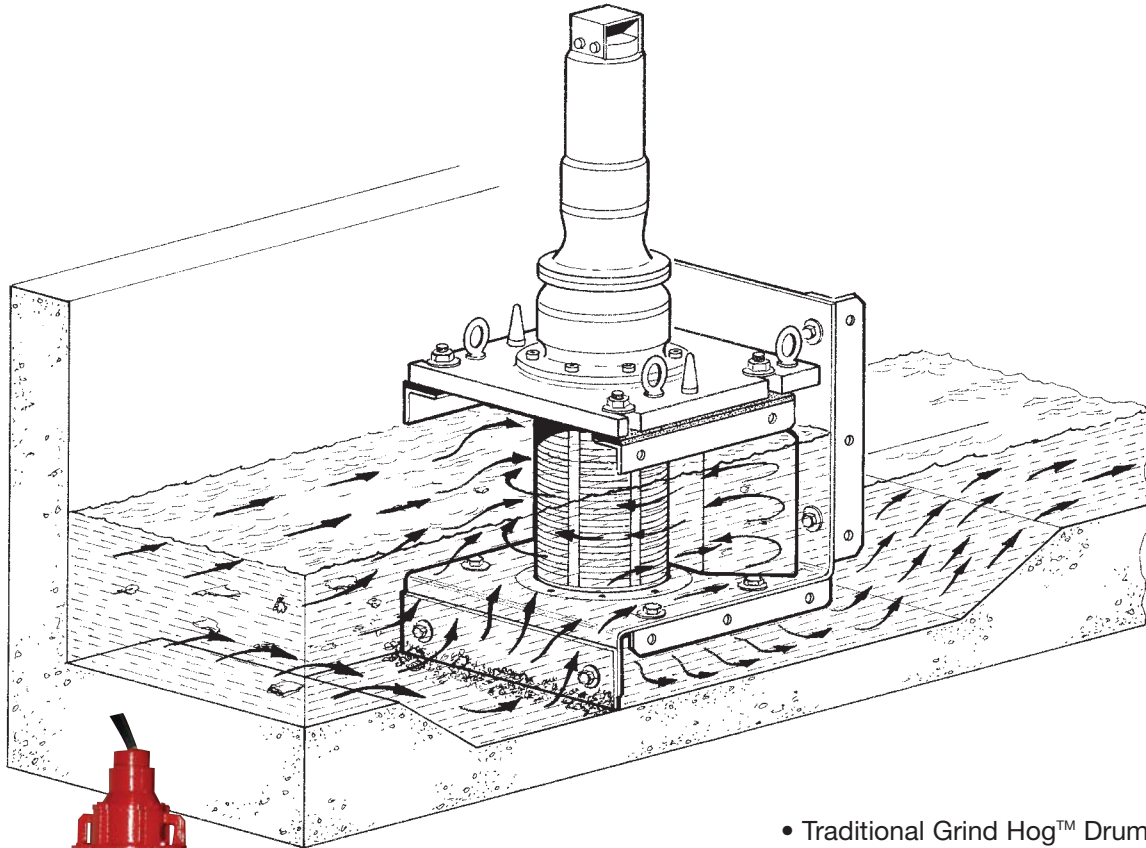


Original Worthington 15-5



Grind Hog™ 16ASX T/S (3.5 mgd) installed

& “Toilet Seat” Mounting



Stainless steel custom fabricated basin

- Traditional Grind Hog™ Drum, Screens, Cutters and Cyclo Drive (500% overload capacity)
- “Easy out” removal for inspection or maintenance
- Flood-proof wastewater motor options
- No submerged bearings or seals

Vertical Discharge

Town of the Blue Mountains - Thornbury, ON.

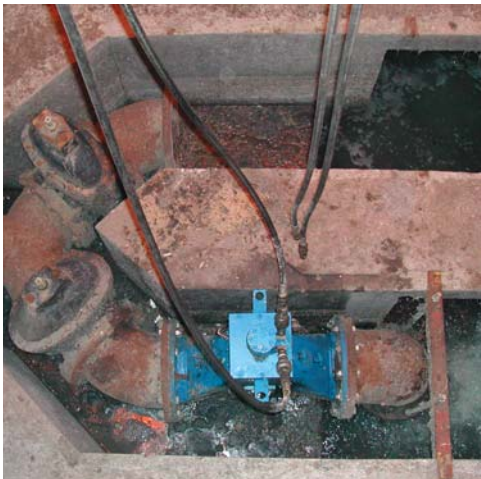
- Grind Hog™ 24A (10 mgd) replacing original Jones & Attwood 25 RM



Flange Mounted

Borough of Everett Area - Municipal Authority, Everett, PA.

- Grind Hog™ 10AH (1.2 mgd) adapted to existing hydraulic power unit

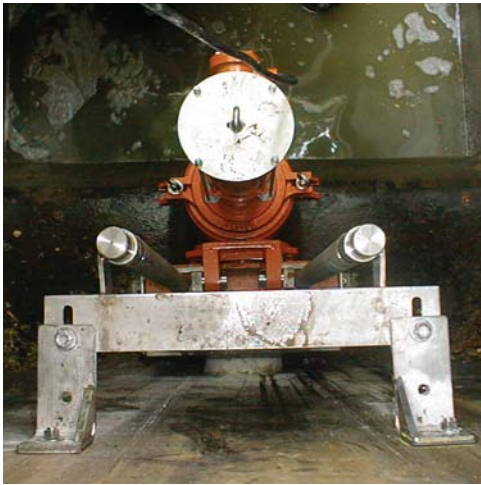


Grind Hog™ 10AH

Pumping Stations

Wood Lane Pump Station - South Middleton Township Municipal Authority, Boiling Springs, PA.

- Grind Hog™ 5AS A/C (130 gpm) Auto-Coupling Slide Rail System



Package Plants

Regency Park - Carlisle, PA.

- Grind Hog™ 5A featuring coupling overflow



Short Block

Interchangeable

Replacement or stand-by component allows for continuous service in applications with multiple Pumping Stations.



Serviceability

Lubrication points now allow for periodic maintenance, ensuring prolonged service.



Reversible Stationary Blade

Cutting bar is reversible - four sets of "leading" edges are available for extended life and greater performance.



GRIND HOG MODEL

MOUNTING ARRANGEMENT	5	7-6	7-8	10	10L	16A	16B	24A	26A
Flange Mount (Pipe)	6"	6"	8"	8"					
Vertical Discharge					●	●	●	●	●
Toilet Seat (Horizontal Flow)					●	●	●	CF	CF
Auto-Coupling Slide Rail System (Wet Well)	●	●	●	●					
Auto-Coupling Slide Rail System (Station)	●	●	●	●					
Kwik Lift Slide Rail System (Removal)					●	●	●	●	●
CAPACITY	130 gpm	315 gpm	315 gpm	850 gpm	850 gpm	3.5 mgd	4.5 mgd	10 mgd	20 mgd
	8.2 l/s	19.9 l/s	19.9 l/s	53.6 l/s	53.6 l/s	13,200 m ³ /day	17,000 m ³ /day	37,800 m ³ /day	75,700 m ³ /day

ACCESSORIES

CF - Consult Factory

Short Block	●	●	●	●					
Coupling Overflow	●	●	●	●					
Splitter Box	●	●	●	●					
Reverse Clearing Controller	●	●	●	●	●	●	●	●	●



G.E.T. INDUSTRIES INC.

TOLL FREE: (877) 213-7418

www.grindhog.com e-mail: get@grindhog.com

represented by: