

Grind HogTM

16ASX - 3.5 MGD

CLEONA BOROUGH AUTHORITY
PENNSYLVANIA
2005

REPRESENTATIVE

Envirep Inc
Camp Hill, PA

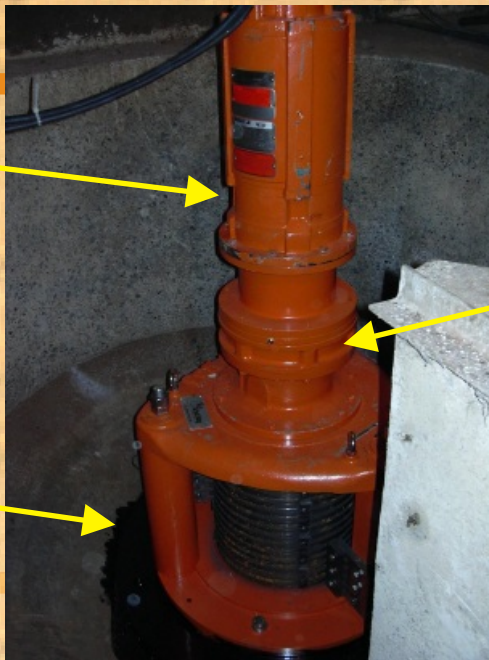


Basin of previously installed
Chicago Pump 25M

RELIANCE ELECTRIC

Submersible Explosion Proof Wastewater Motor Suited to Continuous-In-Air or Submerged-In-Sewage Service

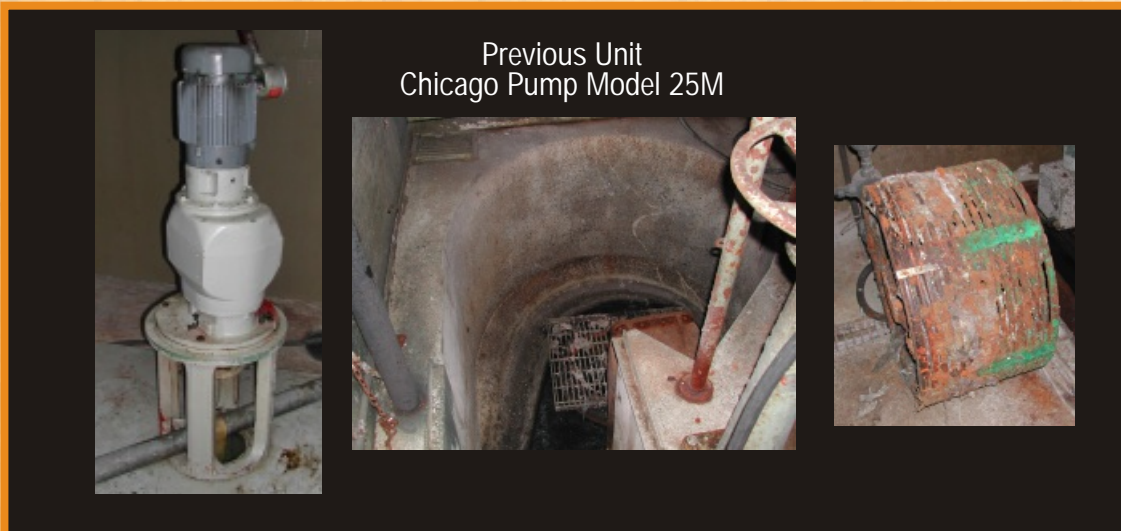
Mounting Plate: Anchor bolts coincide with curb ring of Model 24A - facilitates optional future installation of 10 MGD machine



UNMATCHED RELIABILITY, EXCEPTIONAL PERFORMANCE
Cyclo^ospeed reducers and gear motors are designed to withstand shock loads exceeding 500% of their ratings



Grind HogTM
Reverse Clearing
Controller - NEMA 4X



G.E.T. INDUSTRIES INC.

Toll Free: (877) 213-7418
E-mail: get@grindhog.com ♦ Web: www.grindhog.com